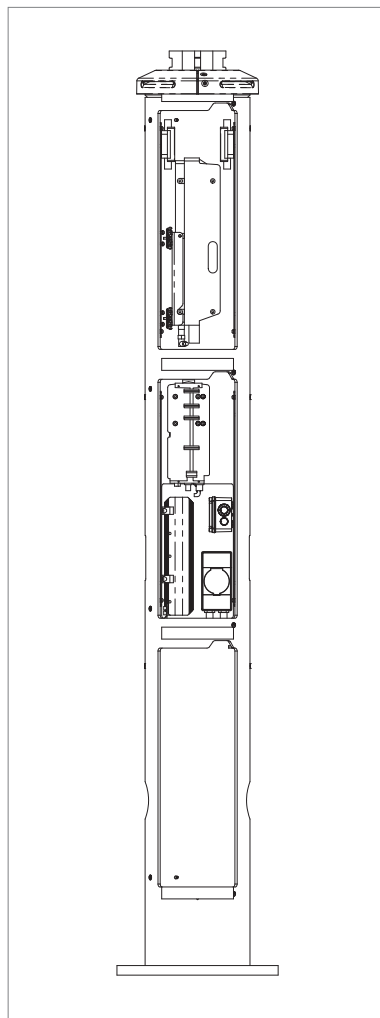
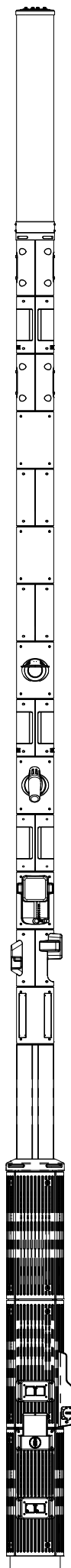




BRACKEN RIDGE, BRISBANE



4G/5G SMALL CELLS IN BASE



4G/5G Capability

The SMART.NODE™ is a discreet, neutral host piece of urban infrastructure and can host multiple small cells and antennas from within the structure. The type of Beacon selected for the SMART.NODE™ determines whether it supports 4G and/or 5G cellular service.

Nokia and Ericsson 4G/5G small cell equipment are all accommodated by the SMART.NODE™. ENE.HUB has arranged national agreements with telecommunications carriers for the discrete deployment of 4G and 5G small cells within the SMART.NODE™.

There are three areas designated to accommodate the required telecommunications equipment, including one area in the Beacon and two areas in the Base.

ENE.HUB

THE TECHNOLOGY ACCOMMODATED BY THE SMART.NODE™ IS CONTINUOUSLY EVOLVING. ENE.HUB CAN INVESTIGATE THE ACCOMMODATION OF ADDITIONAL SCS DEVICES.