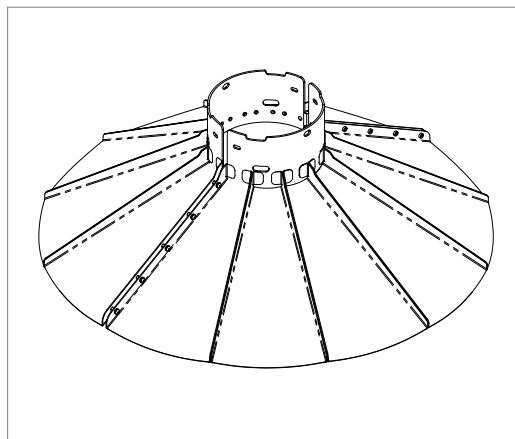
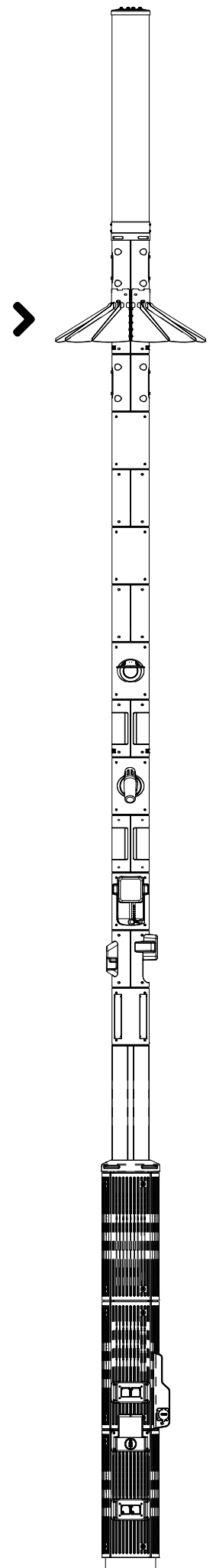




THE MILL, MORETON BAY



WILDLIFE SHROUD, ASSEMBLED VIEW



Wildlife Shroud

ENVIRONMENT

Artificial lighting from streetlights or buildings has a detrimental effect on surrounding wildlife and its ecology. Conserving our natural environments is an important consideration for all Smart Cities.

The SMART.NODE™ Wildlife Shroud is a wrap-around visor that is placed above the Smart Street or Pedestrian Lighting MTM, shielding animals from disruptive upwards light.

Currently, the Wildlife Shroud is only suited for the 7m height SMART.NODEs™ as the visor is attached in the available space Smart Lighting module.

ENE.HUB

THE TECHNOLOGY ACCOMMODATED BY THE SMART.NODE™ IS CONTINUOUSLY EVOLVING. ENE.HUB CAN INVESTIGATE THE ACCOMMODATION OF ADDITIONAL SCS DEVICES.

www.ene-hub.com